



# DUC THANH PROFILE

# CONTENTS

- 1 General Information
- 2 Introduction and Organization
- 3 Factory Tour
- 4 Social Responsibilities

# GENERAL INFORMATION

- ❖ Founder/President: Mr. Tom Nguyen.
- ❖ Telephone: +84 296 393 4501
- ❖ Fax: +84 296 393 4509
- ❖ Email: tomnguyen@ducthanhti.com.vn  
benjamin.le@ducthanhti.com.vn

Type of Organization: Private Company.

Type of Business: Garments & Baby Carrier  
Manufacturer.

# COMPANY INTRODUCTION

## Duc Thanh 1 – TI

Established in August 2001 with 200 employees, 2,000 m<sup>2</sup> factory and 6,000 pieces of garment/week.

### Current

- Total Employees: 1,800
- Total land area: 25,000 m<sup>2</sup>
- Factory Area: 21,868 m<sup>2</sup>
- Production Line: 60 lines
- Capacity: 140,000 pieces /week
- Last Year Production: 8,029,750 pcs of garment.



# DUC THANH 1 – MACHINE LIST

Machine's name	Brand	Total	Machine's name	Brand	Total
Single needle	SIRUBA, GOLDWHEEL,	944	Heat transfer	TSOTA CP-1520	18
Double needles	SIRUBA	330	Manual cutting machine	KM.MACK	17
Triple needles	PFFAF	16	Band knife machine	KM-O-TECH- EASTMAN	3
Swing machine	PFFAF	2	End cutter machine	EASTMAN	15
5 thread - Over lock	SIRUBA , GOLD WHEEL	359	Fabric inspection machine	MINH GIANG - SALOON	2
4 thread - Over lock	SIRUBA	55	Generator power	MISUBISHI - Hữu Toàn	2
Kansai - 12 needle	SIRUBA	17	CAD Design machine (plotter & co	ALYS 30-ALYS-60	3
Kansai - 13 needle	SIRUBA	26	Maker on fabric	SM-301L	3
Interlock machine	SIRUBA	114	Fusing machine	TT-HASHIMA	6
Hem stitch	TREASURE - YAMATO	12	Steam boiler ironing system	GMB - 0513B	2
Zigzag	SINGER JUKI - ZO J E	7	Cutting plotter	JINGWEI	1
Button sew lockstitch	SICAMA-OSHIMA-JUKI-	20	Fabric rolling machine - 1.8m	MXV - 01	2
Button hole	BROTHER - JUKI	56	Vacuum machine	SHOP.VAC, Longlife	11
Bar tack	NITAKA-TAKING-	18	Exhaust fans	Long Truong Phat	56
Snap machine	TAKING-JACK	24	Pull test machine	HAIDA	1
Steam boiler	GIBI RONO - GMB	6	Metal detector machine	HASHIMA HN-770G	3
Desk vacuum	NAOMOTO-TAKING-	92	Taggun	DENNISON ST-950	6
Thread vacuum	TSSM	6	Industry dehumidifiers machine	FUTE HM-1688D	2
Washer & Dryer	Electrolux-DISR473	10	Automatic fabric spreading	Kawakami	2
Bobbin winder	OSHIMA-HONGYAN	18	Compressor	PUMA, TOSHIBA	7
			<b>Total</b>		<b>2,294</b>

# COMPANY INTRODUCTION

## Duc Thanh 2 – KL

- Established in December 2008 with 1,365 employees.
- Total land area 13,935.6 m<sup>2</sup>
- Factory area 13,803.96 m<sup>2</sup>
- Production line: 48 lines
- Capacity 80,000 pcs/week.
- Last year production 5,000,000 pieces of garment.



# DUC THANH 2 – MACHINE

Machine's name	Brand	Total	Machine's name	Brand	Total
Single needle	Brother, Durkopp	892	Thread vacuum	MKT (TC-374)	3
Double needles	Brother, Siruba	145	Washer & Dryer	Elextrolux, Aqua	8
Triple needles	Pfaff	20	Bobbin winder	Japsew	4
Rolling Slope machine	Pfaff	10	Heat transfer	CP 69 - CP 1520T	16
4 thread - Over lock	Siruba	72	Manual cutting machine	KM.MACK	8
5 thread - Over lock	Siruba	232	Band knife machine	Easement	2
6 thread - Over lock	Siruba	8	End cutter machine	Easement	6
Electronic - Over lock	Siruba	69	Fabric inspection machine	Minh Giang	2
Kansai	Siruba	23	Generator power	MISUBISHI	3
Interlock machine	Siruba	145	CAD Design machine (plotter & computer)	ALYS-60	3
Zigzag	Siruba	6	Fusing machine	Hashima	3
Button sew lockstitch	Sicama, Siruba	16	Vacuum machine	Toshiba	2
Button hole	Juki	47	Metal detector machine	Easement	2
Bar tack	Brother, Juki	13	Taggun	Saga	3
Snap machine	Tacking, Uack	17	Industry dehumidifiers machine	Newage	2
Steam boiler	GMB	4	Automatic fabric spreading	Kawakami	3
Desk vacuum	NATAKA	60	Compressor	OSAKA	3
Irons	Silver Star	60	<b>Total</b>		<b>1,912</b>

# COMPANY INTRODUCTION

## Duc Thanh 3 – ERGO

- Established in May 2015 with 709 employees.
- Total land area 6,000 m<sup>2</sup>
- Factory area 7,385 m<sup>2</sup>
- Production line: 11 lines
- Capacity 33,000 pcs/week.
- Last year production  
1,500,000 pieces
- 100% FOB product





# DUC THANH 3 – MACHINE

Machine's name	Brand	Total	Machine's name	Brand	Total
Single needle	Brother, Pfaff	451	Kansai	PFAFF Asia	1
Double needles	Siruba, Brother	22	Sewing machine programming	Nisho, Brother,	16
Coverstitch	Siruba	7	Box stitch machine	Brother, PFAFF	17
4 thread - Over lock	Siruba	8	Portable steam presser	Wetori	2
5 thread - Over lock	PFAFF	12	Bar tack	Taking TK-872	2
Button hole	Juki	19	Washer & Dryers	Electrolux	2
Snap machine	Taking	12	Sharp test machine	Gester GT-MB01	1
Fabric inspection machine	Wetori	1	Automatic fabric spreading	Kawakami	2
Maker	SM	1	Automatic fabric cutting machine	CKMK - 700/900	1
Fabric rolling machine	Kawakami	1	Light box	Gester GT - D08(06)	1
CAD Design machine (plotter & computer)	ALYS-60	2	Generator	Mitsubishi	1
Manual cutting machine	KM.MACK, Fastman	13	Cooling System	Daikin	29
Band Knife Machine	Fastman, CKM, KM	3	Fans	Gali	31
End cutter machine	Sulee	6	Pull test machine	Gester	1
Fusing machine	Wetori - WT.1010	2	Automatic scale machine	Gester	1
Heat transfer	Wetori - 1580	2	Metal detector	Hashima-HN-670C-	4
Button sew lockstitch	Juki	6	<b>Total</b>		<b>686</b>
Interlock machine	Siruba	6			

# COMPANY INTRODUCTION

## THANH TRUC – DT

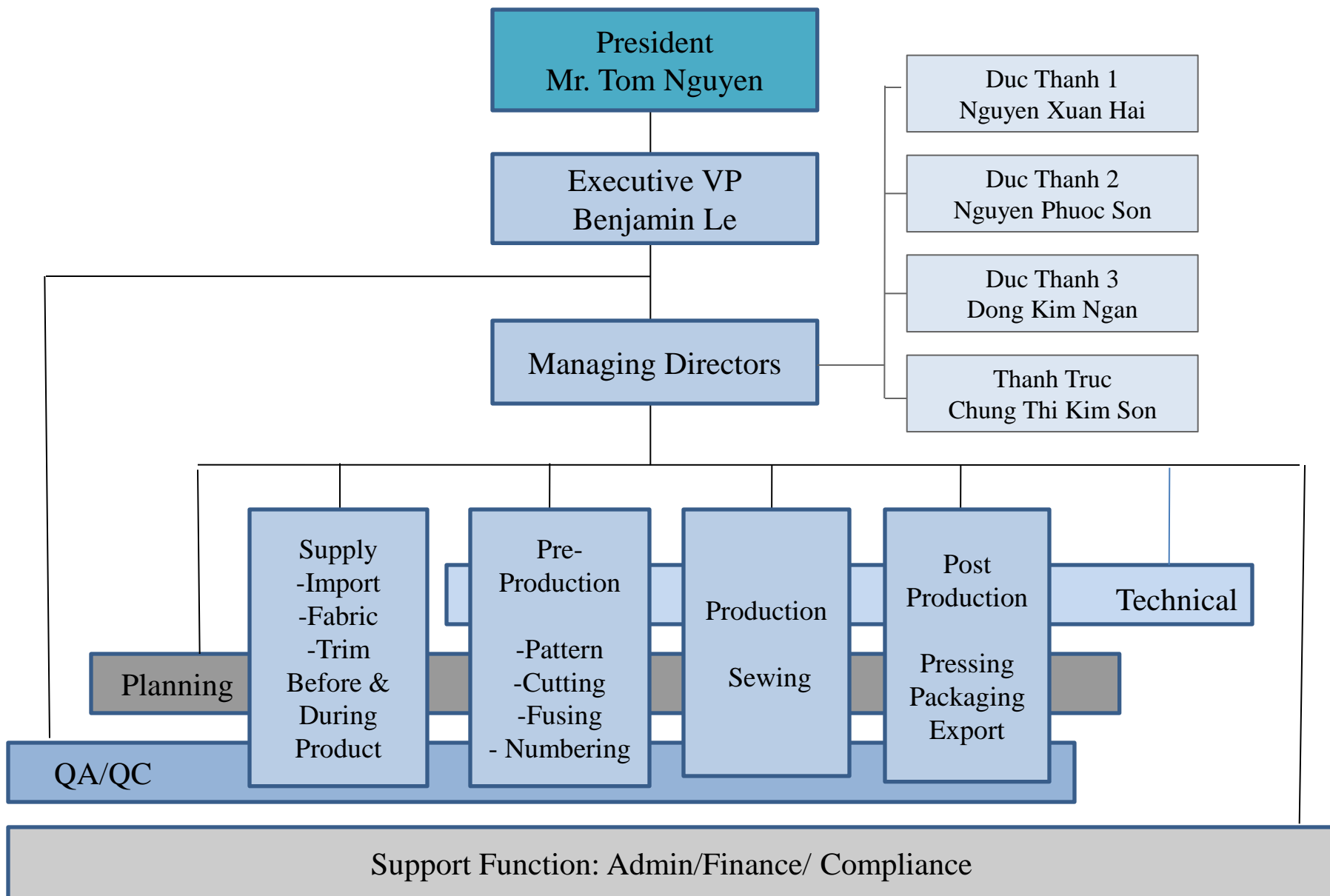
- Established in November 2006
- Total Employees: 500
- Total land area: 6,343.4m<sup>2</sup>
- Factory Area: 10,126m<sup>2</sup>
- Production Lines: 24 lines
- Capacity: 60,000 pieces/week
- Last Year Production: 2,800,000 pcs



# THANH TRUC – MACHINE

Machine's name	Brand	Total	Machine's name	Brand	Total
Single needle	Siruba, Pfaff, Juki	347	Bobbin winder	Oshma	1
Double needles	Siruba, Pfaff, Juki	109	Fusing machine	Ashi A	2
Coverstitch	Siruba	7	Hang Tag	Taking 9000	1
Over lock machine	Siruba	120	Numbering	N607	12
Kansai	Siruba	18	Irons	Pen 3500	40
Interlock machine	Siruba, MingJang	25	Steam boiler	GMB	2
Bartag	Sicama, Goldenwell,	27	Air Cooler	Fujiwa	2
Button hole	Pfaff, Sicama, Goden	27	Heat transfer	Wetori	4
Button sew lockstitch	Juki, Zoje, Osima	10	Thread Roller	Taking	1
Snap machine	Taking	12	Generator power	Stamford	1
Fabric inspection machine	Minh Giang	1	Fans	My Phong	236
CAD Design machine (plotter & computer)	ALYS-60	1	Cooling System	Daikin	13
Manual cutting machine	KM.MACK	7	Metal detector machine	Easement	1
Band knife machine	Texenco	1	Compressor	HISCREW	2
Hem Stitch	Yamato	5		<b>Total</b>	<b>1,035</b>

# Duc Thanh Balance Matrix Organization Competitive Advantage



## Structure in Balance Matrix Organization

- Each department operates independently.
- The operation is monitored by cross function departments.
- Processes, instructions and procedures have been set up based on Target, Walmart, ErgoBaby standards.
- Shorter execution time.
- Better resources by varied activities. Build up multi tasking skills for resources.
- Flexible manpower base on requirements of customer.

# DUC THANH ORGANIZATION

## ➤ Vertical Departments

- Fabric and Trim Departments
- Pattern/marker Department
- Cutting Department
- Numbering and Bundling Department
- Manufacturing Department
- Warehouse Department
- Technical Department
- Import/Export Department

## ➤ Horizontal Departments

- Planning Department
- QA/QC Department
- Admin/Financial/ Compliance Department



# CUSTOMERS AND PRODUCTS

- ❖ Target
- ❖ Walmart
- ❖ Cherokee Uniform
- ❖ Walt Disney
- ❖ Universal Studio
- ❖ Class Room
- ❖ Life
- ❖ Scrub
- ❖ Dickies



- ❖ -
- Target Polo T-Shirt
- Target School uniform
- Target Scooter
- Target Capri Pants
- Medical Uniform
- School Uniform
- Polo T-shirt
- Workwear
- Casual wear
- Children wear
- Fashion wear
- -

# CERTIFICATES AND ACCREDITED



- Walmart
- Target
- Dickies
- Disney
- Universal Studio
- GAP
- Kohl
- ErgoBaby
- Lee Japan

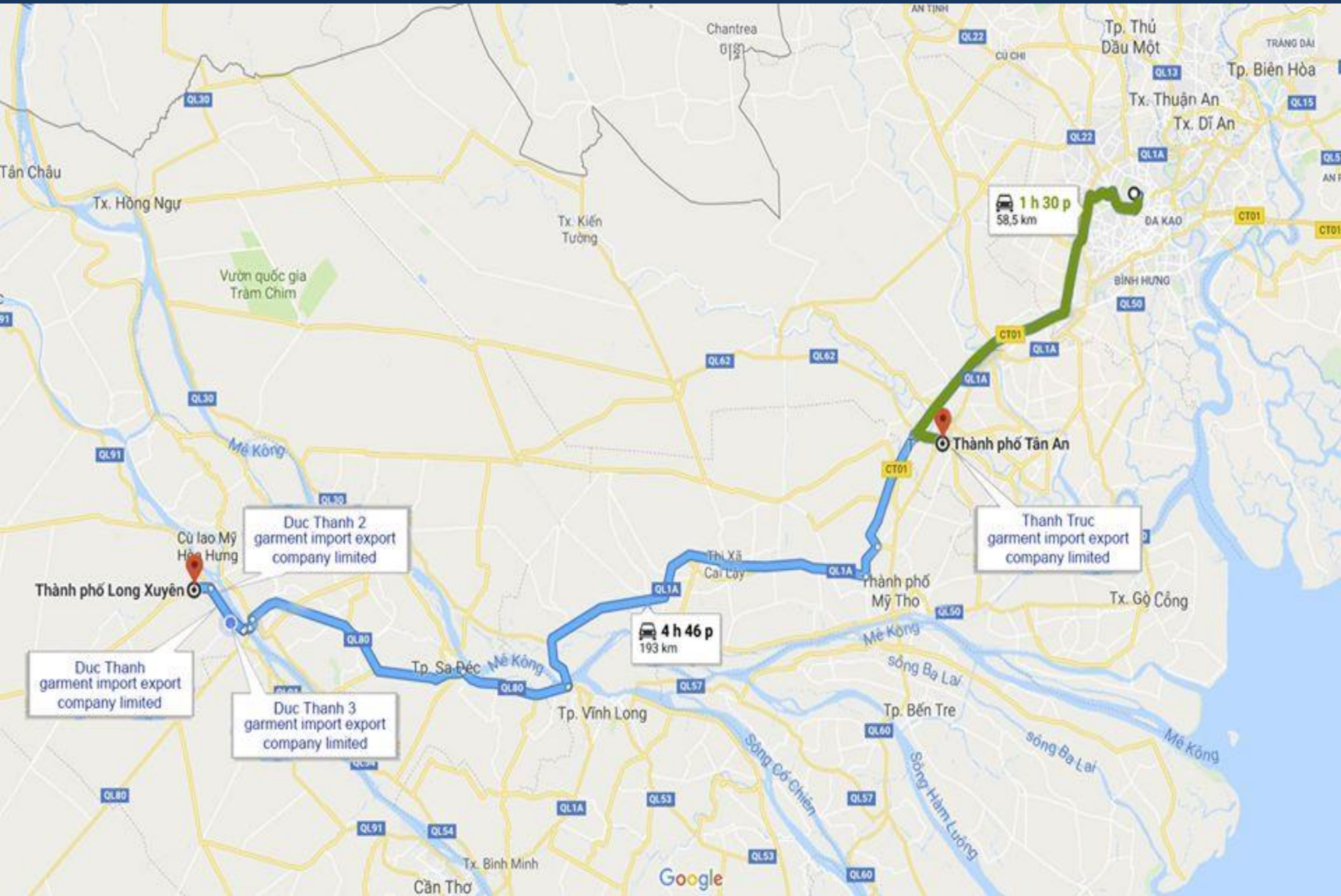


Valued Quality. Delivered.





# Map from the Tan Son Nhat Airport to Thanh Truc & Duc Thanh 1,2,3



# FACTORY TOUR



Let walk thru the factories together with us

# DUC THANH 1



# DUC THANH 2



# DUC THANH 3



# THÀNH TRỰC



# FABRIC WAREHOUSE

More than 4 million yards of fabrics  
are in the warehouses

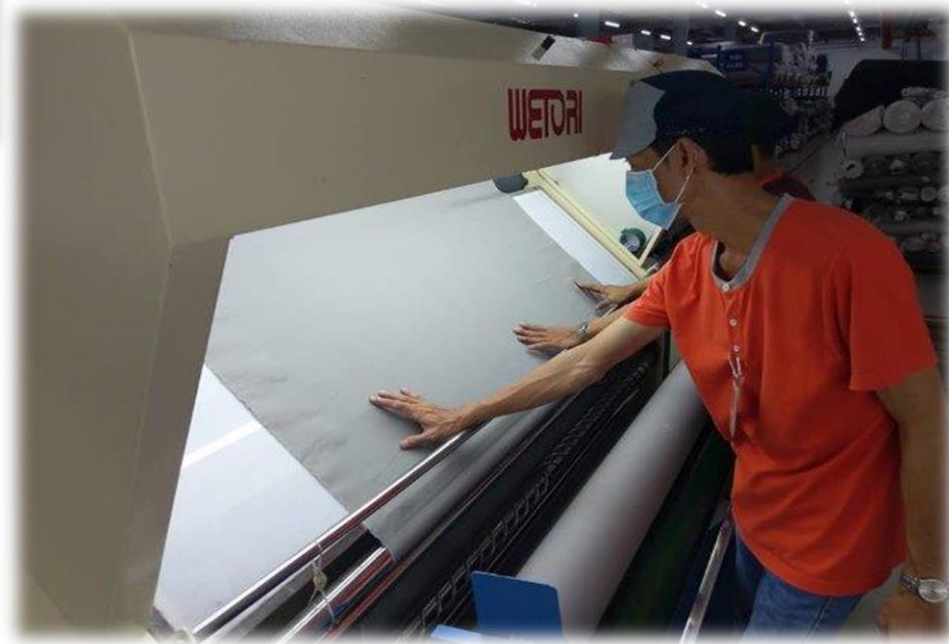


# FABRIC INSPECTION



Grey Scale

Light Box





# CUTTING



# NUMBERING AND BUNDLING



# HEAT TRANSFER AND FUSING



# SEWING LINE



# SEWING LINE



# QUALITY CONTROL



Inline QC  
End Line QC  
QC2 100% Inspection  
QC3 100% Final Inspection  
Open Boxes Random Inspection



# METAL DETECTOR CONTROL



Raw material 100%  
Finished products 200%  
Calibration every hour



# TESTING



Pull Test Machine

Daily testing: buckles,  
zippers, snap buttons



Sharp point test



Small object choking test



Wash test, Shrinkage test



# PRODUCTS



# PRODUCTS



# ERGO BABY PRODUCTS

ergobaby  
**Swaddler**



**Infant-insert  
Original**



# PACKING AND WAREHOUSE



# EXPORT



Always inspect cargo before leaving factory

# Social Responsibilities – Helping Others



Give a little make a big different  
If you can't feed hundred people then just feed one

# Social Responsibilities – Helping Others



Give gifts to poor people at difficult conditions areas in Tet holiday

# Social Responsibilities – Helping Others



Monthly Duc Thanh Charity give gifts to poor elderly and scholarship support for students go to school.



# Social Responsibilities – Helping Others

Support the unfortunate life.  
Built 52 charity houses for poor employees at Duc Thanh.  
Combined with Trade Union and local government support to repair 20 houses for poor employees.



# Social Responsibilities – Helping Others

Duc Thanh has build 10 bridges at difficult condition areas, helps people convenient for transportation.



# Social Responsibilities – Helping Others



Duc Thanh has contributed more than 50 ambulances for Red cross and Hoa Hao Buddhist





# Thank You !

Contact us:

Tom Nguyen

Email: [tomnguyen@ducthanhti.com.vn](mailto:tomnguyen@ducthanhti.com.vn)

Benjamin Le

Email: [benjamin.le@ducthanhti.com.vn](mailto:benjamin.le@ducthanhti.com.vn)